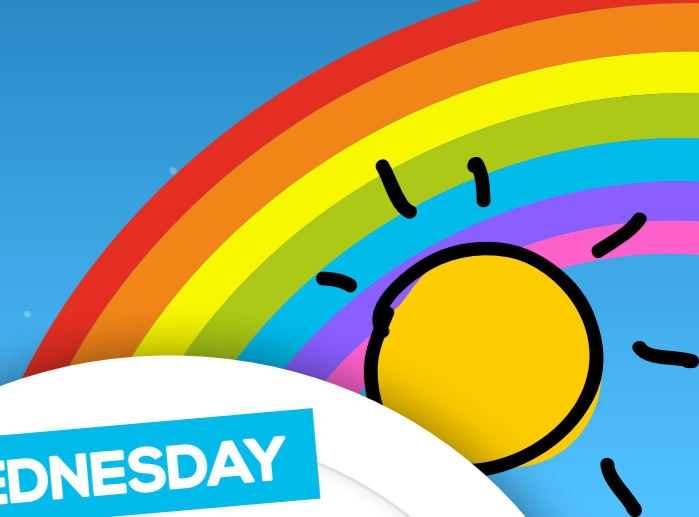
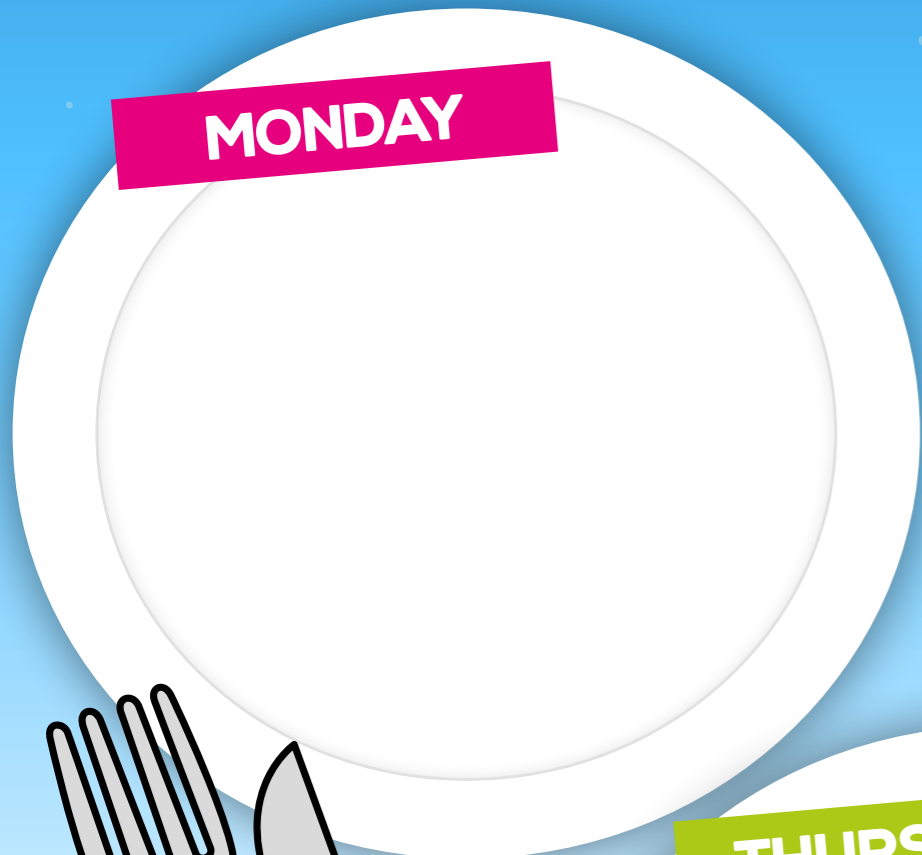


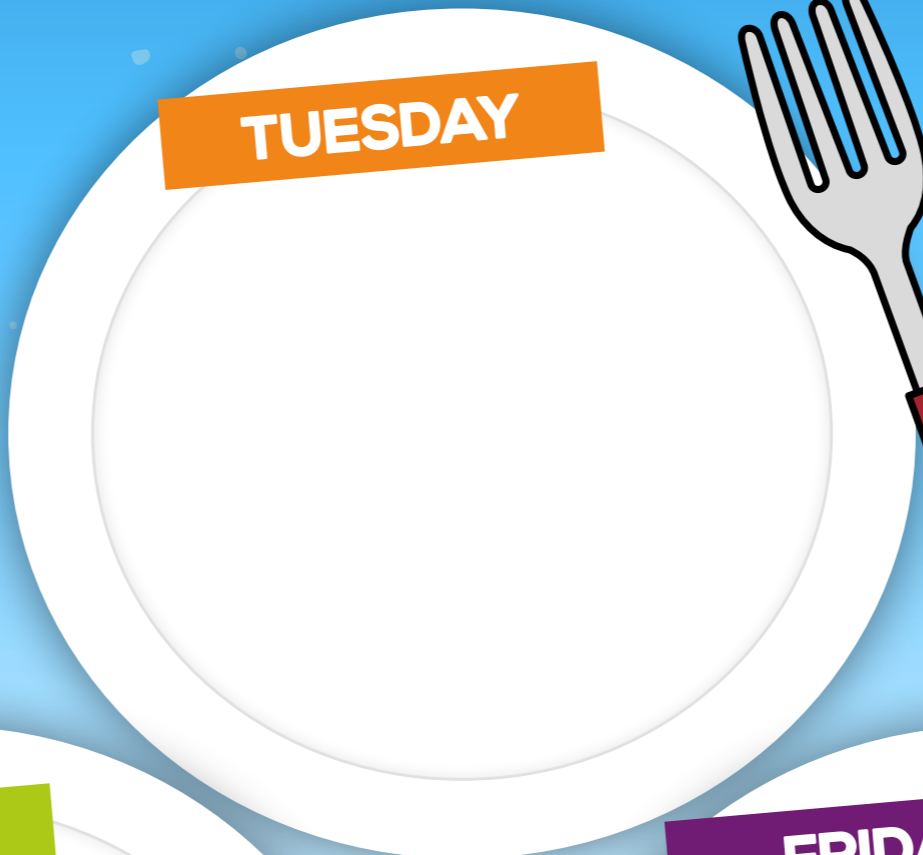
YOUR MENU WEEK



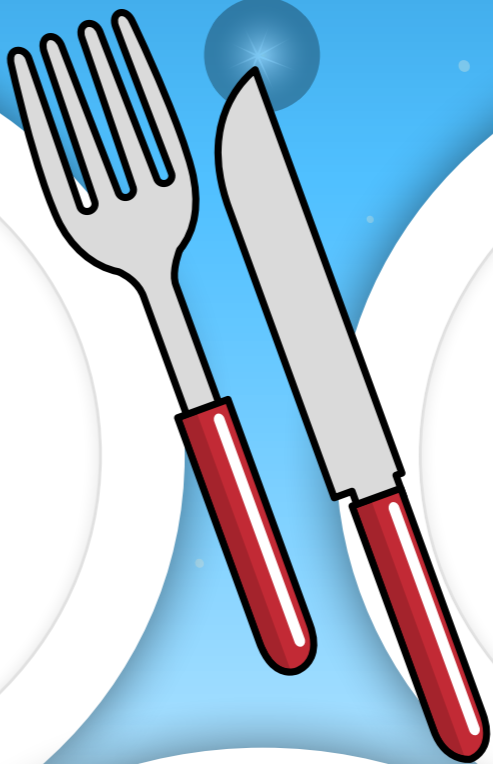
MONDAY



TUESDAY



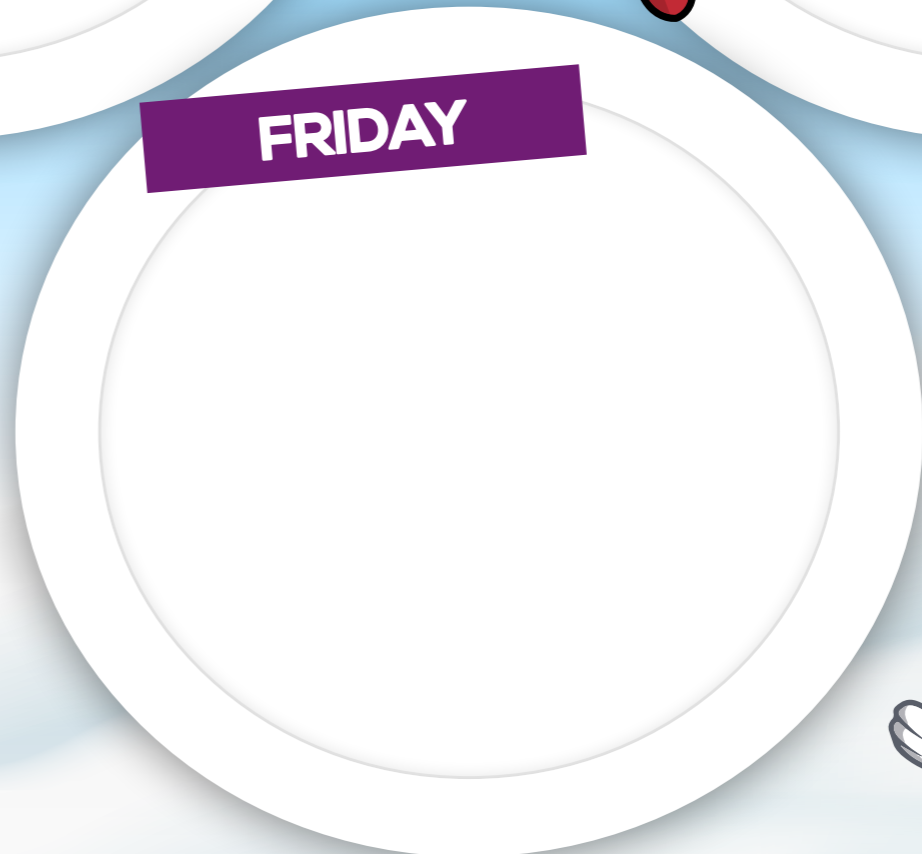
WEDNESDAY



THURSDAY



FRIDAY



Salad Bar

Fresh seasonal salad bar with freshly baked bread and a selection of fresh fruits and yoghurts daily.



For any Allergen/Dietary requirements please speak to the Catering Supervisor.



Washwood Heath Multi Academy Trust